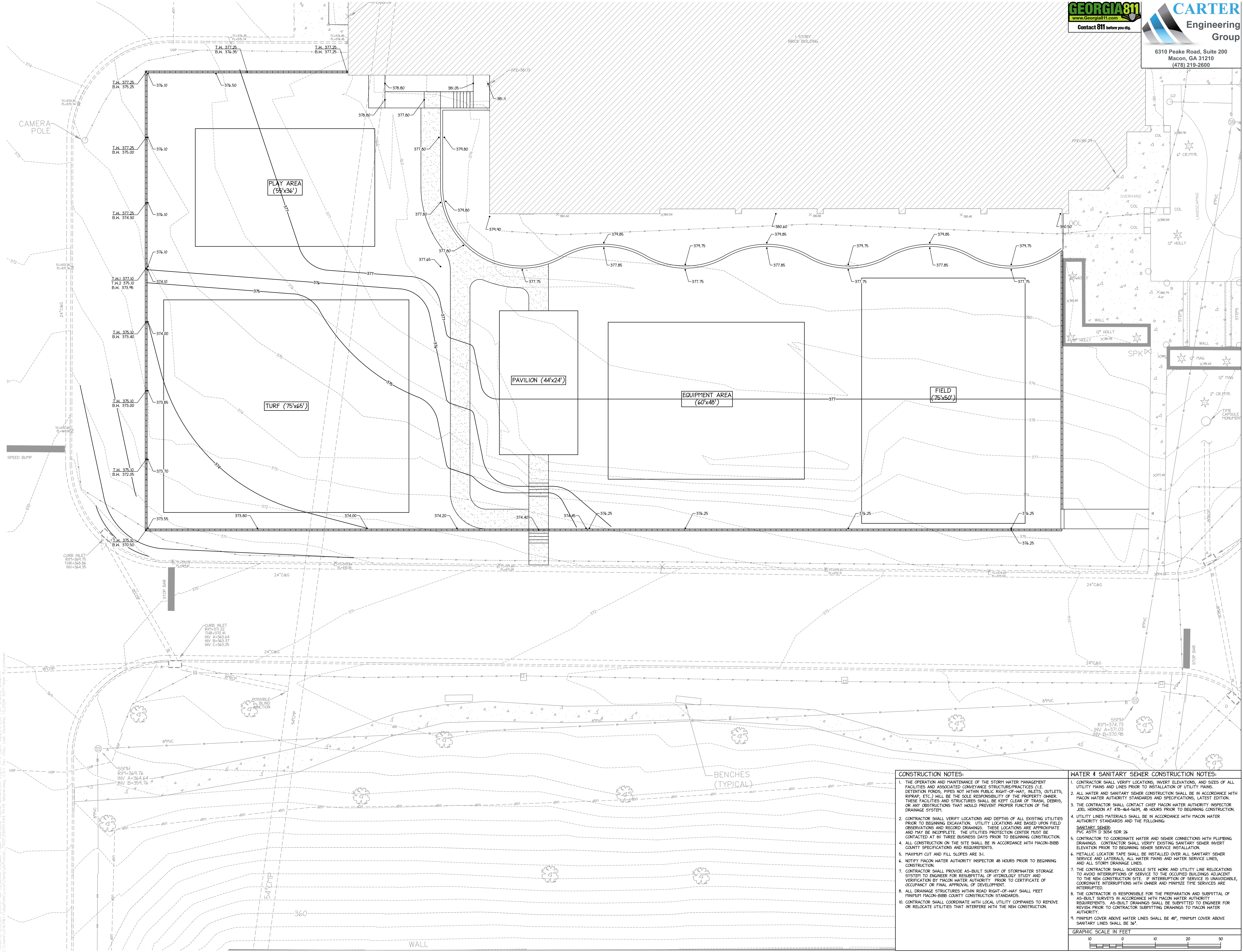


Revisions:

Sheet Title:
SITE DEVELOPMENT PLAN

Project #: 2413 Date: 05/01/2026

C3.1

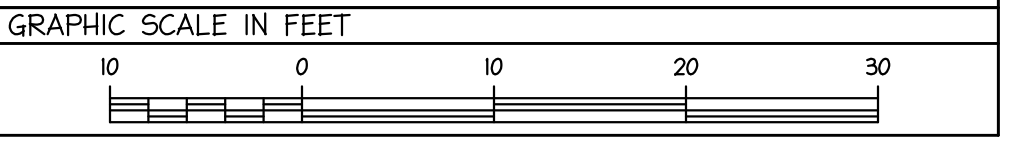


CONSTRUCTION NOTES:

1. THE OPERATION AND MAINTENANCE OF THE STORM WATER MANAGEMENT FACILITIES AND ASSOCIATED CONVEYANCE STRUCTURES (I.E. DETENTION PONDS, PIPES NOT WITHIN PUBLIC RIGHT-OF-WAY, INLETS, OUTLETS, RIPRAP, ETC.) WILL BE THE SOLE RESPONSIBILITY OF THE PROPERTY OWNER. THESE FACILITIES AND STRUCTURES SHALL BE KEPT CLEAR OF TRASH, DEBRIS, OR ANY OBSTRUCTIONS THAT WOULD PREVENT PROPER FUNCTION OF THE DRAINAGE SYSTEM.
2. CONTRACTOR SHALL VERIFY LOCATIONS AND DEPTHS OF ALL EXISTING UTILITIES PRIOR TO BEGINNING EXCAVATION. UTILITY LOCATIONS ARE BASED UPON FIELD OBSERVATIONS AND RECORD DRAWINGS. THESE LOCATIONS ARE APPROXIMATE AND MAY BE INCOMPLETE. THE UTILITIES PROTECTION CENTER MUST BE CONTACTED AT 811 THREE BUSINESS DAYS PRIOR TO BEGINNING CONSTRUCTION.
3. ALL CONSTRUCTION ON THE SITE SHALL BE IN ACCORDANCE WITH MACON-BIBB COUNTY SPECIFICATIONS AND REQUIREMENTS.
4. MAXIMUM CUT AND FILL SLOPES ARE 3:1.
5. NOTIFY MACON WATER AUTHORITY INSPECTOR 48 HOURS PRIOR TO BEGINNING CONSTRUCTION.
6. CONTRACTOR SHALL PROVIDE AS-BUILT SURVEY OF STORMWATER STORAGE SYSTEM TO ENGINEER FOR RESUBMITTAL OF HYDROLOGY STUDY AND VERIFICATION BY MACON WATER AUTHORITY PRIOR TO CERTIFICATE OF OCCUPANCY OR FINAL APPROVAL OF DEVELOPMENT.
7. ALL DRAINAGE STRUCTURES WITHIN ROAD RIGHT-OF-WAY SHALL MEET MINIMUM MACON-BIBB COUNTY CONSTRUCTION STANDARDS.
8. CONTRACTOR SHALL COORDINATE WITH LOCAL UTILITY COMPANIES TO REMOVE OR RELOCATE UTILITIES THAT INTERFERE WITH THE NEW CONSTRUCTION.

WATER & SANITARY SEWER CONSTRUCTION NOTES:

1. CONTRACTOR SHALL VERIFY LOCATIONS, INVERT ELEVATIONS, AND SIZES OF ALL UTILITY MAINS AND LINES PRIOR TO INSTALLATION OF UTILITY MAINS.
2. ALL WATER AND SANITARY SEWER CONSTRUCTION SHALL BE IN ACCORDANCE WITH MACON WATER AUTHORITY STANDARDS AND SPECIFICATIONS, LATEST EDITION.
3. THE CONTRACTOR SHALL CONTACT CHIEF MACON WATER AUTHORITY INSPECTOR JOEL HERRON AT 478-464-5629, 48 HOURS PRIOR TO BEGINNING CONSTRUCTION.
4. UTILITY LINES MATERIALS SHALL BE IN ACCORDANCE WITH MACON WATER AUTHORITY STANDARDS AND THE FOLLOWING:
SANITARY SEWER:
PVC ASTM D 3034 SDR 26
5. CONTRACTOR TO COORDINATE WATER AND SEWER CONNECTIONS WITH PLUMBING DRAWINGS. CONTRACTOR SHALL VERIFY EXISTING SANITARY SEWER INVERT ELEVATION PRIOR TO BEGINNING SEWER SERVICE INSTALLATION.
6. METALLIC LOCATOR TAPE SHALL BE INSTALLED OVER ALL SANITARY SEWER SERVICE AND LATERALS, ALL WATER MAINS AND WATER SERVICE LINES, AND ALL STORM DRAINAGE LINES.
7. THE CONTRACTOR SHALL SCHEDULE SITE WORK AND UTILITY LINE RELOCATIONS TO AVOID INTERRUPTIONS OF SERVICE TO THE OCCUPIED BUILDINGS ADJACENT TO THE NEW CONSTRUCTION SITE. IF INTERRUPTION OF SERVICE IS UNAVOIDABLE, COORDINATE INTERRUPTIONS WITH OWNERS AND FINIMIZE THE SERVICES ARE INTERRUPTED.
8. THE CONTRACTOR IS RESPONSIBLE FOR THE PREPARATION AND SUBMITTAL OF AS-BUILT SURVEYS IN ACCORDANCE WITH MACON WATER AUTHORITY REQUIREMENTS. AS-BUILT DRAWINGS SHALL BE SUBMITTED TO ENGINEER FOR REVIEW PRIOR TO CONTRACTOR SUBMITTING DRAWINGS TO MACON WATER AUTHORITY.
9. MINIMUM COVER ABOVE WATER LINES SHALL BE 48\"/>



P:\3000 - DUNWODY/BEELAND ARCHITECTS\3000-049 SITE DEVELOPMENT\3000-049 PH1B Master.dwg, C3.1.dwg, Date: 01/22/2026 08:57 AM
 Plotted: 5/1/2026 9:06:57 AM By: jaylene Conaway - Project Engineer - Device: NameCenter_C3201 (P) R. gpcj, Sheet: C. 243, Plot: 01/22/2026, 8:05:16 AM
 C:\Users\jcc@dw.com\AppData\Local\Temp\AcadPlotter\3000-049 PH1B Master.dwg, C3.1.dwg, Date: 01/22/2026, 8:05:16 AM

