



**CITY OF DALTON PUBLIC WORKS  
DEPARTMENT REQUEST FOR  
QUALIFICATIONS FOR ENGINEERING  
SERVICES**

East Morris Street Corridor Improvements

RFQ Released: 05/27/2026

**General:** The City of Dalton is seeking the services of a qualified engineering consultant to perform analysis and design for sidewalk connectivity and transportation infrastructure improvements on East Morris Street located within the City of Dalton. Responding firms shall have a strong record providing design services to local governments in Georgia and experience in working on Federally Assisted Projects. The City of Dalton will select a design engineer from the respondents to this request using the selection criteria provided within this request for qualifications packet.

**Proposal Scope Statement:** The proposed project spans approximately 1.92 miles along E. Morris Street from Green Street to Walnut Avenue. The project scope is for providing engineering design, analysis, recommendations, and professional services otherwise noted for the elements enumerated within this packet. Based on the direction provided by the Public Works Department as the project progresses, the consultant should be expected to prioritize value engineered considerations to maximize returns on investment of taxpayer funds while meeting objectives specified within the RFQ packet. The final designed hardscape improvement's theme and mobility accommodations are intended to reflect continuity of corridor improvements recently completed by the City on East Morris Street from Glenwood Avenue to Green Street.

**Submission Deadline:** The Department requests submissions be provided by Friday, July 10<sup>th</sup>, 2026. Submissions are requested to be provided to the Public Works Department Project Manager Jackson Sheppard via email at [jsheppard@daltonga.gov](mailto:jsheppard@daltonga.gov), or by mail addressed "ATTN: Public Works Jackson Sheppard" to PO Box 1205 Dalton, GA 30722. Open lines of communication will be maintained for any specific inquiries through the requested submission date.

**Program Delivery:** The engineering firm will work closely with the Public Works Department throughout the life of the project. The engineering firm shall provide cost provisions for field visits with City staff and community stakeholders throughout the course of the project. Consultant shall provide incremental design iteration milestones (30%, 60%, 90%, IFP/IFC). The engineering firm may propose different design milestones at their discretion. Through issuance for construction, the awarded firm shall accompany each design iteration with a technical memorandum noting any changes from previous iterations, and pertinent explanations of design rationale. Final construction plan sets shall incorporate all necessary sections to construct the project through procurement of a general contractor. The design firm shall produce a right-of-way (ROW) plan set delineating existing ROW boundaries, and required ROW for corridor improvements reflected within plan set deliverables issued for construction. Engineering firms shall be required to provide monthly status updates for the contracted services via written memorandum until final construction plans, and any associated contract documents or required permitting have been delivered whichever is last. This project may be let for construction in phases depending on total cost to

construct the final design. Contingencies associated with cost are requested to be incorporated by the engineer to provide multiple quantity takeoffs within incremental stations of the full design for each predetermined phase of the improvements to be individually let for construction. The engineering firm shall deliver all technical specifications incorporated within the construction bid package for the full construction plans. With the exception of directed incremental quantity takeoffs and bid package technical specifications, the consultant shall only be required to provide services for bid package production for the first construction phase of the project once determined as the design progresses.

---

### **Program Delivery Exclusions:**

**Consultant is not requested to provide the following services:**

1. Procurement Oversight – Procurement Administration (Anything Beyond Bid Package Production with the Exception of Assistance with RFI's as Requested by the City)
- 

### **REQUESTED QUALIFICATIONS SUBMITTAL:**

- o Statement of firm qualifications and portfolio of completed projects of a similar scope illustrating a proven record of experience and technical expertise.
- 

### **PROPOSAL REQUIRED SCOPE OF SERVICES**

#### **Streetscape Design Elements**

- o **Sidewalk Design and ADA Compliance:**
    1. Design and analysis of the sidewalk network to ensure compliance with the Americans with Disabilities Act (ADA).
    2. Ensure connectivity and continuity of sidewalks throughout the project area, particularly addressing gaps in pedestrian routes.
    3. Evaluate existing pedestrian infrastructure and design upgrades to existing infrastructure if needed.
    4. Evaluate and propose necessary modifications to ensure ease of access for individuals with disabilities, including crosswalks, ramps, and curb extensions.
-

5. Sidewalk to include continuity on both sides of the corridor with a grassed beauty strip where feasible.
- 
- **Curb and Gutter Design:**
    1. Incorporate curb and gutter enhancements necessary for urban streetscape traffic safety and stormwater management best practices.
  - **Driveway Alterations**
    1. Incorporate alterations to existing driveways as needed for meeting objectives within the project scope.
  - **Intersection Enhancements, Traffic Signal & Pavement Markings**
    1. Inclusive of all other associated elements required for the corridor improvements design.
  - **On-Street Parking**
    1. Incorporate on-street parking where conducive to do so.
    2. At appropriate preliminary design stages, consultant shall propose recommendations for conducive on-street parking locations for the City to review.
  - **Mid-Block Pedestrian Crossings**
    1. Evaluate the feasibility of including mid-block pedestrian crossings in areas warranted within the corridor limits.
    2. At an appropriate preliminary design stage, consultant shall propose recommendations for conducive mid-block crossing locations for consideration of incorporating into final design.
  - **Center Island & Raised Medians**
    1. Center islands and raised medians shall be incorporated where deemed appropriate for best transportation design practices, and any applicable objectives specified within the project scope.
  - **Minimum Required Landscaping Elements**
    1. The intent is to provide the minimum landscaping elements associated with identification and incorporation of grassed beauty strips, and grassed islands that are potentially conducive for installing shrubs & trees to be completed at a later date. The City intends to involve its Arborist during the design development to provide feedback regarding landscaped areas.
  - **Stormwater Management**
    1. Design services for new stormwater infrastructure required to construct hardscape elements within the corridor.
    2. Evaluate performance of existing stormwater infrastructure, and incorporate necessary drainage improvements to mitigate hydraulic deficiencies for specified minimum storm event levels of service as

specified within the Whitfield-Dalton Stormwater Local Design Manual.

---

## **Other Required Services**

### **1. Traffic Studies**

- Consultant shall be responsible for conducting all required traffic count data collection and interpretation services when necessary to meet objectives specified within the project scope.

### **2. Utility Conflict Adjustments and Coordination:**

- Coordination with local utility providers for conflict resolution of proposed improvements.
- Incorporate utility conflict adjustments within construction plans.
- The intent of this project is only to require underground relocations or additions as necessary for meeting specified objectives within the project scope.

### **3. Field Survey**

- Consultant shall be responsible for obtaining all field survey data.

### **4. Construction Plans**

- Provide plan set iterations and accompanied documents outlined within the program delivery narrative.

### **5. Right-of-Way Plans**

- Develop right of way plans reflecting the existing, and required right-of-way as applicable for the entirety of the study corridor.

### **6. CAD Drawings**

- Provide survey & final design CAD files to the city in .dwg format compatible with current Autodesk Civil3D applications.

### **7. Procurement Documentation Production**

- Provide procurement assistance inclusive of bid package production utilizing the City's standard bid package and contract documents.
- Provide any technical specifications necessary for construction of proposed improvements.
- Assistance with contractor RFI's as needed by the City during procurement & through construction.

### **8. Engineer's Estimate**

- Provide quantity takeoffs and cost estimations of construction services for completing proposed improvements.
  - Provide multiple quantity takeoffs for incremental construction phases.
9. **Environmental Permitting Assistance**
- Provide any services necessary for obtaining any environmental permits required to complete the project outside of permits obtained by general contractor for construction.
10. **Stakeholder Engagement**
- Consultant shall incorporate stakeholder engagement services including periodic on-site coordination as necessary.

---

**ADD-ALTERNATE SERVICES:** Incorporate Separate Pricing for Add-Alternate Listed Below (The Intent is to Award the Full Proposal Price)

11. **Construction Oversight**
- Project Management Services throughout the entire construction process.

---

**Consultant Proposal Provisions & Submission Requirements:**

The Proposal Delivered by the Engineering Consultant shall Incorporate the Following:

- **Consultant Qualifications** - Statement of firm qualifications and portfolio of completed projects of a similar scope illustrating a proven record of experience and technical expertise.
- **Project Scope** – Detailed Narrative of Proposal and Qualifications
- **Project Team** – Outline of Specific Services Designating Responsible Parties for Specific Scope Elements (i.e. survey, traffic studies, design disciplines, etc.)
- **Required Services Outline** – Comprehensive Breakdown of Services to be Provided Illustrating Structure and Methodology for Program Delivery
  - Illustrates conformity to the Project Charter, Scope of Services, and required Program Delivery elements specified within this request for proposal packet.
  - Outline shall include any additional elements not otherwise mentioned that are essential to complete each required scope of services specified.
- **Excluded Services Outline** – Comprehensive Breakdown of Pertinent Excluded Technical Services Otherwise Not Mentioned within this Request for Qualifications

- **Compensation & Form of Contract** – Illustrating Lump-Sum Comprehensive Fees for Required Project Scope Elements & Individual Pricing for Add-Alternate Elements as well as Applicable Contract Terms
- **Standard Rate and Fee Schedule**
- **Any Standard Contract Provisions of the Consultant Firm**
- **Stated Time to Complete all Deliverables Necessary for Phase I of Construction Contractor Procurement**

**Conclusion:** The City of Dalton seeks a qualified engineering consultant to help enhance its transportation infrastructure through comprehensive design and planning. This project aims to create a safer, more accessible, and aesthetically pleasing environment for all users, while addressing key challenges related to stormwater management, utility coordination, and pedestrian safety.

---

### Examples of Previously Completed Hardscape Improvements



*Figure 1 Mid-Block Facing West Before*

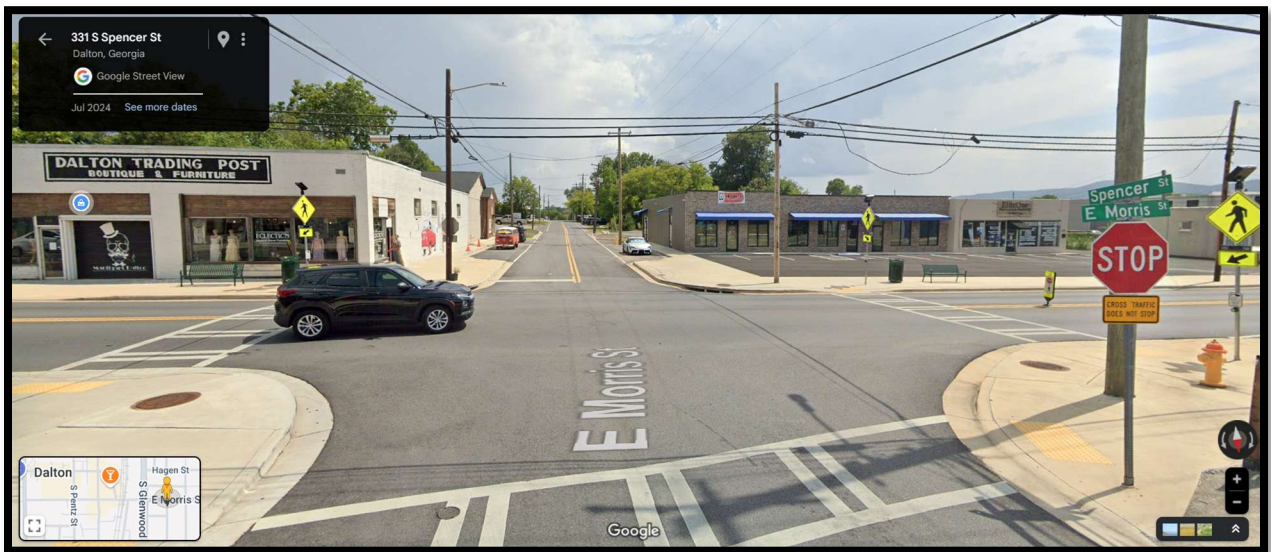
City of Dalton Public Works Department  
RFQ East Morris St. Corridor Improvements



Figure 2 Mid-Block Facing West After.



*Figure 3 Spencer St Intersection Facing South Before*



*Figure 4 Spencer St Intersection Facing South After*