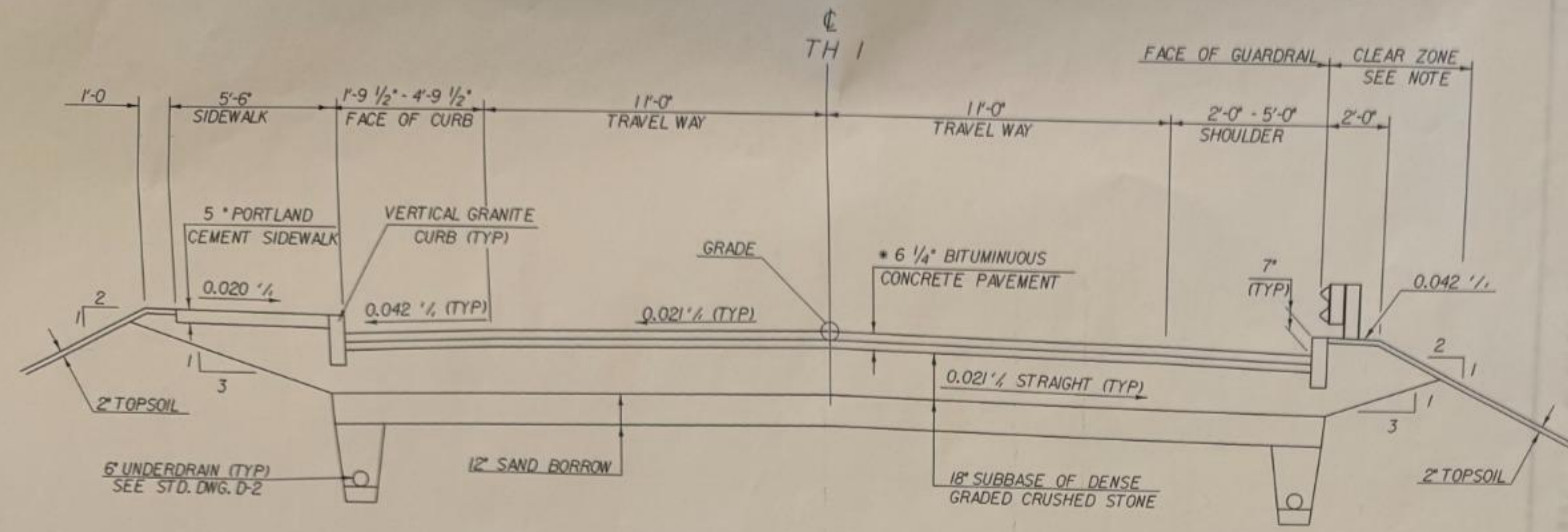


**SEEDING FORMULA  
URBAN AREAS**

% WT.	LBS./A.	NAME	PUR %	GEF
42.5	34.0	CREEPING RED FESCUE	98	85
10.0	8.0	PERENNIAL RYE GRASS	95	90
42.5	34.0	KENTUCKY BLUE GRASS	85	85
5.0	4.0	ANNUAL RYE GRASS	95	95
100.00	80.0			

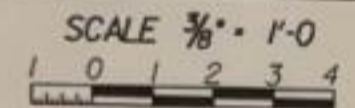
**GENERAL NOTES**

- SEED MIXTURE: SHALL NOT HAVE A WEED CONTENT EXCEEDING 0.40% BY WEIGHT AND SHALL BE FREE OF ALL NOXIOUS SEED.
- SEED: TO BE APPLIED PER SEEDING FORMULAS OR AS DIRECTED BY THE ENGINEER.
- FERTILIZER: FORMULA 10-20-10, TO BE USED WITH SEED, APPLIED AT THE RATE OF 500 LBS./ACRE. (HYDRO SEEDERS MAY USE 19-19-19 FORMULA).
- AGRICULTURAL LIMESTONE: TO BE APPLIED AT THE RATE OF 2 TONS/ACRE, OR AS DIRECTED BY THE ENGINEER.
- HAY MULCH: TO BE PLACED ON EARTH SLOPES AT THE RATE OF 2 TONS/ACRE, OR AS DIRECTED BY THE ENGINEER.
- TOPSOIL: TO BE USED WITH SEED AS INDICATED ON THE PLANS, OR AS DIRECTED BY THE ENGINEER.
- MARKER POSTS: TO BE PLACED AS INDICATED OR AS DIRECTED BY THE ENGINEER.
- SLOPE ROUNDING: ALL CUT SLOPES TO BE ROUNDED IN ACCORDANCE WITH STANDARD SHEET B-5.
- PAY LIMITS OF SAND BORROW: WHEN USED IN CONJUNCTION WITH UNDERDRAIN - SEE STANDARD SHEET D - 2.
- TACK COAT: EMULSIFIED ASPHALT IS TO BE APPLIED AT THE RATE OF 0.015 GAL/SY BETWEEN SUCCESSIVE COURSES OF PAVEMENT AT THE DISCRETION OF THE ENGINEER.



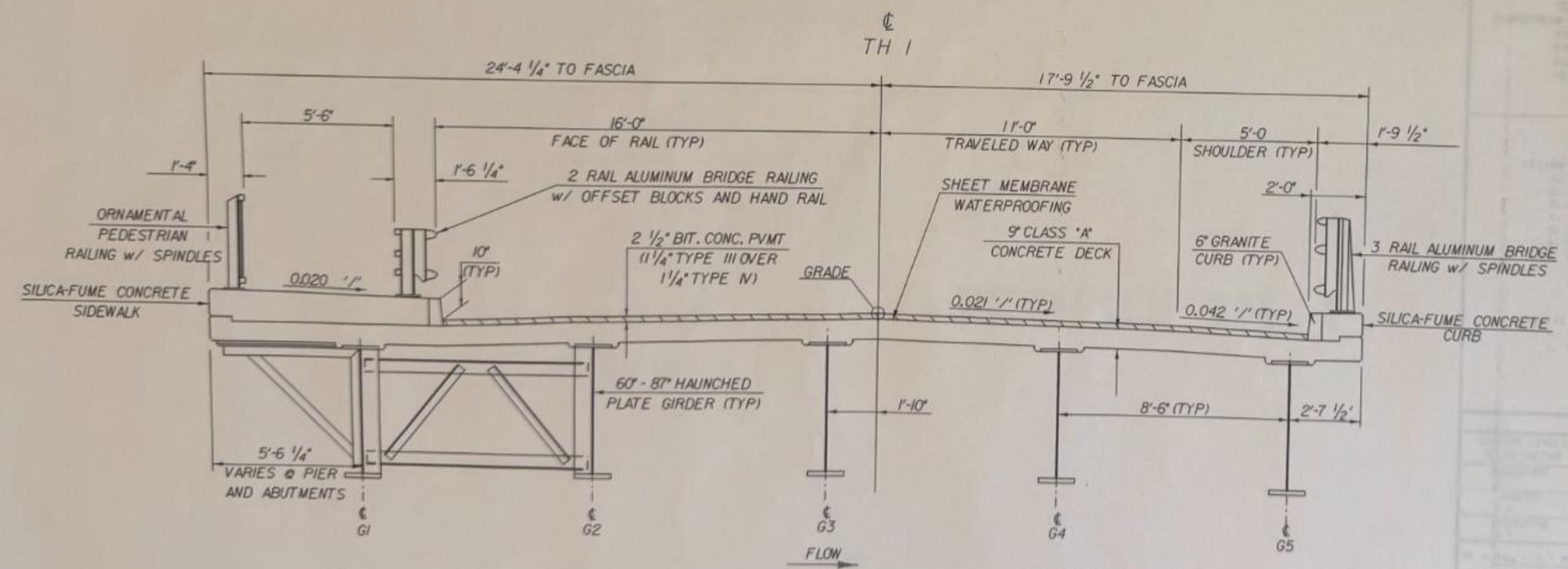
MATERIAL ITEM	TOLERANCE
PAVEMENT	+/- 1/4"
SUB BASE	+/- 1"
SAND BORROW	+/- 1"

**TH 1  
ROADWAY TYPICAL SECTION**

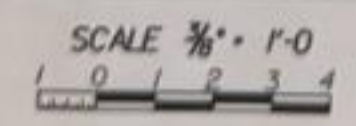


\* BITUMINOUS CONCRETE PAVEMENT  
 1<sup>ST</sup> LIFT - 3" TYPE I  
 2<sup>ND</sup> LIFT - 2" TYPE II  
 3<sup>RD</sup> LIFT - 1 1/4" TYPE III

NOTE:  
 THE CLEAR ZONE SHALL BE 4' OUTSIDE THE FACE OF RAIL WHEN NO RAIL IS PRESENT  
 THE CLEAR ZONE SHALL BE 3' OUTSIDE THE FACE OF CURB.



**BRIDGE TYPICAL SECTION**



**STATE OF VERMONT  
AGENCY OF TRANSPORTATION**

Town Of **ROYALTON** Bridge No. **3**

Highway No. **TH 1** Log Sta. **TH 1 OVER THE WHITE RIVER**

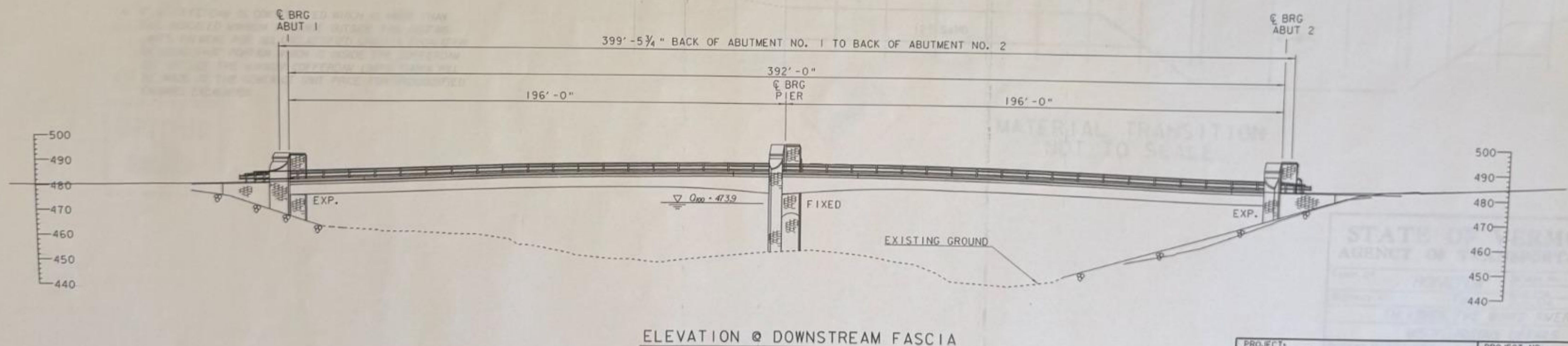
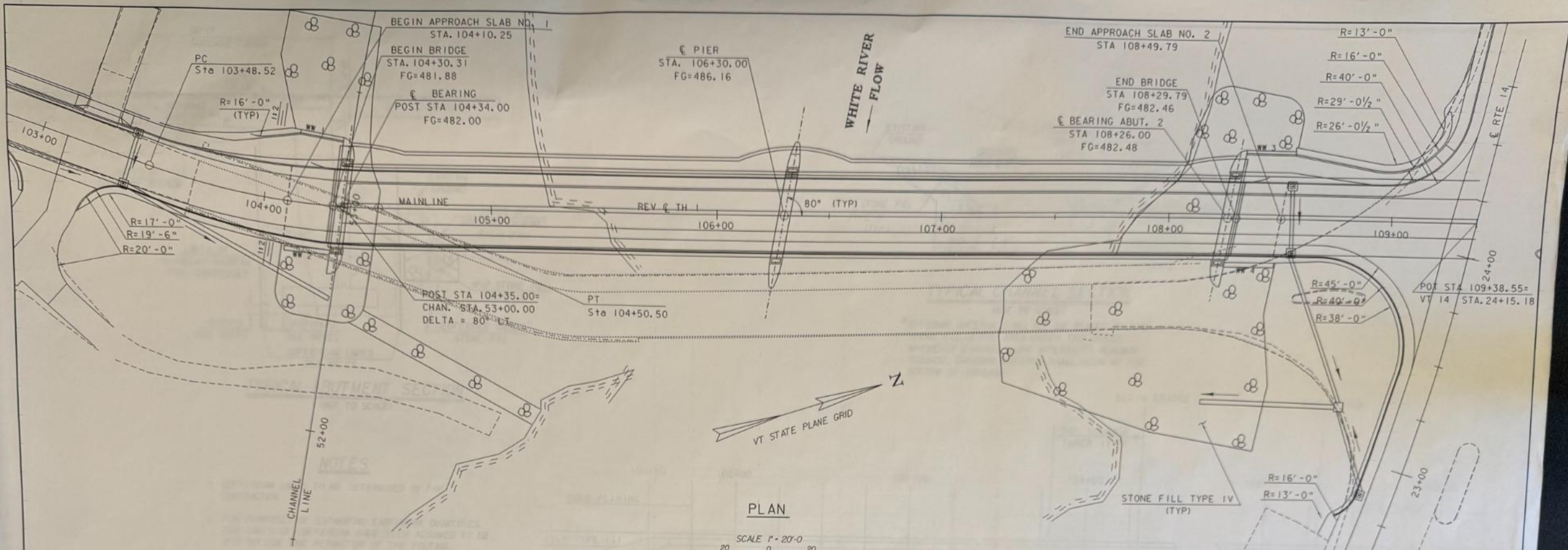
DESIGNED BY **W.B. SYMONDS** DRAWN BY **W.B. SYMONDS**

CHECKED BY **C.P. WILLIAMS** DATE **11/96** BRIDGE DESIGN SUPERVISOR **J.B. MCCARTHY** DATE **12/1995**

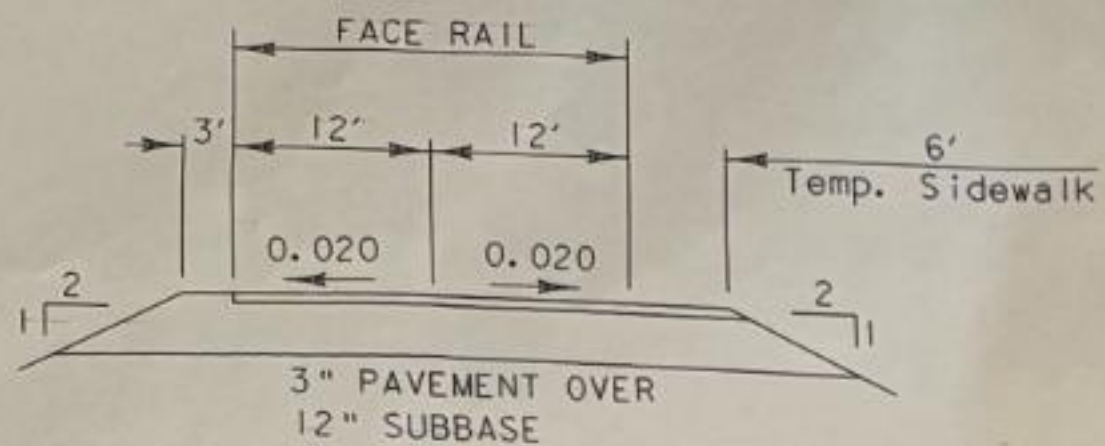
PROJECT **ROYALTON** PROJECT NO. **BRZ 1444(22)**

LG.C. info. **o:\USERS\PROF\WBS\1099\1099222.dgn** s:\j099typj

R. O. W. SHEET 2 OF 11 SHEETS



PROJECT: <b>ROYALTON</b>	PROJECT NO.: <b>BRZ 1444(22)</b>
DESIGN FILE NAME: /str4/89j099/sj099pe.dgn	PLOT DATE: 27-JUL-1999
IPARM FILE NAME: sj099pe.l	TH 1 OVER THE WHITE RIVER
PLAN AND ELEVATION	
R. O. W. SHEET 6 OF 11 SHEETS	



TYPICAL DETOUR SECTION  
NOT TO SCALE

Detour Curve #2

PC	=	8+47.164
PI	=	8+92.684
PT	=	9+33.483
Radius	=	110.000
Delta	=	44°57'39.04"
Length	=	86.319
Degree of Curvature (Arc)	=	2°05'13.46"
Tangent	=	45.519
Chord	=	84.121
Middle Ordinate	=	8.359
External	=	9.046

Detour PI  
Sta 5+00.00 =  
M Sta 100+00.00

Detour PI  
Sta 7+50.30 =  
M Sta 102+50.30



SEE NOTE 4

SEE NOTE 3 THIS SHEET

APPROXIMATE TEMPORARY  
CONSTRUCTION LIMITS

TEMPORARY SIDEWALK  
(SEE GENERAL NOTES)

BEGIN TEMPORARY BRIDGE  
Sta 9+25.00

END TEMPORARY BRIDGE  
BEGIN EXISTING TRUSS  
Sta 10+80.00

PI  
Sta 8+92.68

WHITE RIVER

Detour Curve #1

PC	=	7+26.678
PI	=	7+50.300
PT	=	7+73.216
Radius	=	110.000
Delta	=	24°14'24.87"
Length	=	46.538
Degree of Curvature (Arc)	=	2°05'13.46"
Tangent	=	23.622
Chord	=	46.192
Middle Ordinate	=	2.452
External	=	2.508

PLAN

SCALE 1" = 40'-0"

TEMPORARY NOTES:

1. Temporary approach traffic signs shall be according to Vermont Standard E-107 unless detailed otherwise on this sheet.
2. The temporary detour alignment in the vicinity of abutment 2 shall be modified to allow two way traffic flow without interfering with the abutment 2 cofferdam. The exact centerline location will be determined based on the cofferdam limits.
3. Temporary pedestrian traffic in the vicinity of abutment 2 shall travel from the downstream side of the detour alignment to the sidewalk on the upstream side of the new bridge location. This pedestrian traffic shall be adequately protected from the construction operation in this area.
4. Temporary pedestrian traffic in the vicinity of abutment 1 shall cross as shown on this layout sheet.
5. The bridge rail for temporary bridge shall transition smoothly into the existing rail on the truss and shall be connected positively to the truss railing.
6. Access to drive @ Sta. 13+25 shall be maintained at all times during construction.

LEGEND

- REFLECTORIZED BARRELS
- SIGN POSTS
- PEDESTRIAN FENCE
- TYPE III BARRICADES
- TYPE III BARRICADES (MOD.)
- TEMP. TRAFFIC BARRIER
- TEMP. CROSSWALK

PROJECT: ROYALTON	PROJECT NO.: BRZ 1444(22)
DESIGN FILE NAME: /str4/89j099/sj099det.dgn	PLOT DATE: 27-JUL-1999
IPARM FILE NAME: /sj099det.l	TH I OVER THE WHITE RIVER
TEMPORARY DETOUR LAYOUT	
R. O. W. SHEET 8 OF 11 SHEETS	