

FIGURE 1

Town of Norwich
SFY26 VTrans Grants in Aid
Turnpike Rd Culverts
Construction due: Sept. 30, 2026



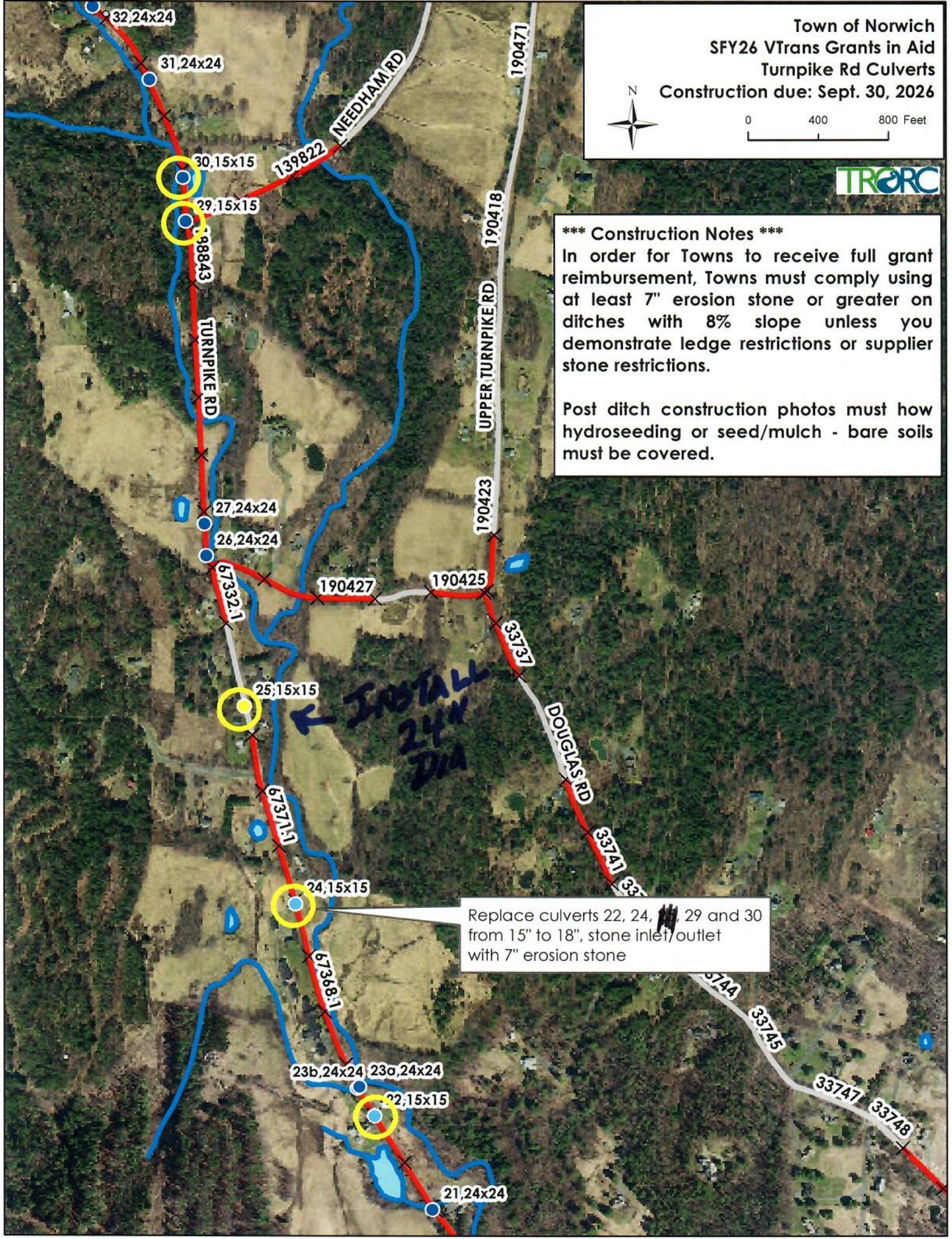
0 400 800 Feet



*** Construction Notes ***

In order for Towns to receive full grant reimbursement, Towns must comply using at least 7" erosion stone or greater on ditches with 8% slope unless you demonstrate ledge restrictions or supplier stone restrictions.

Post ditch construction photos must show hydroseeding or seed/mulch - bare soils must be covered.



Replace culverts 22, 24, 29 and 30 from 15" to 18", stone inlet/outlet with 7" erosion stone