

PLOTTED: 01/20/25 7:53 AM



PROPERTY LINE FROM SURVEY

ASSUMED ROW FROM SURVEY

EXISTING STORM STRUCTURE

EXISTING FFE
923.35'

EXISTING STORM STRUCTURE

DEMO EXISTING PAVEMENT



GRAPHIC SCALE

1 inch = 5 ft.
for sheet size 24" x 36"

No.	Description	Date	Stamp
1	COORDINATION UPDATE	02/20/25	

ENGINEERING VENTURES PC
 208 Flynn Avenue, Suite 2A, Burlington, VT 05401 • 802-863-6225
 85 Mechanic Street, Suite E2-3, Lebanon, NH 03766 • 603-442-9333
 414 Union Street, Schenectady, NY 12305 • 518-205-9141
 www.engineeringventures.com

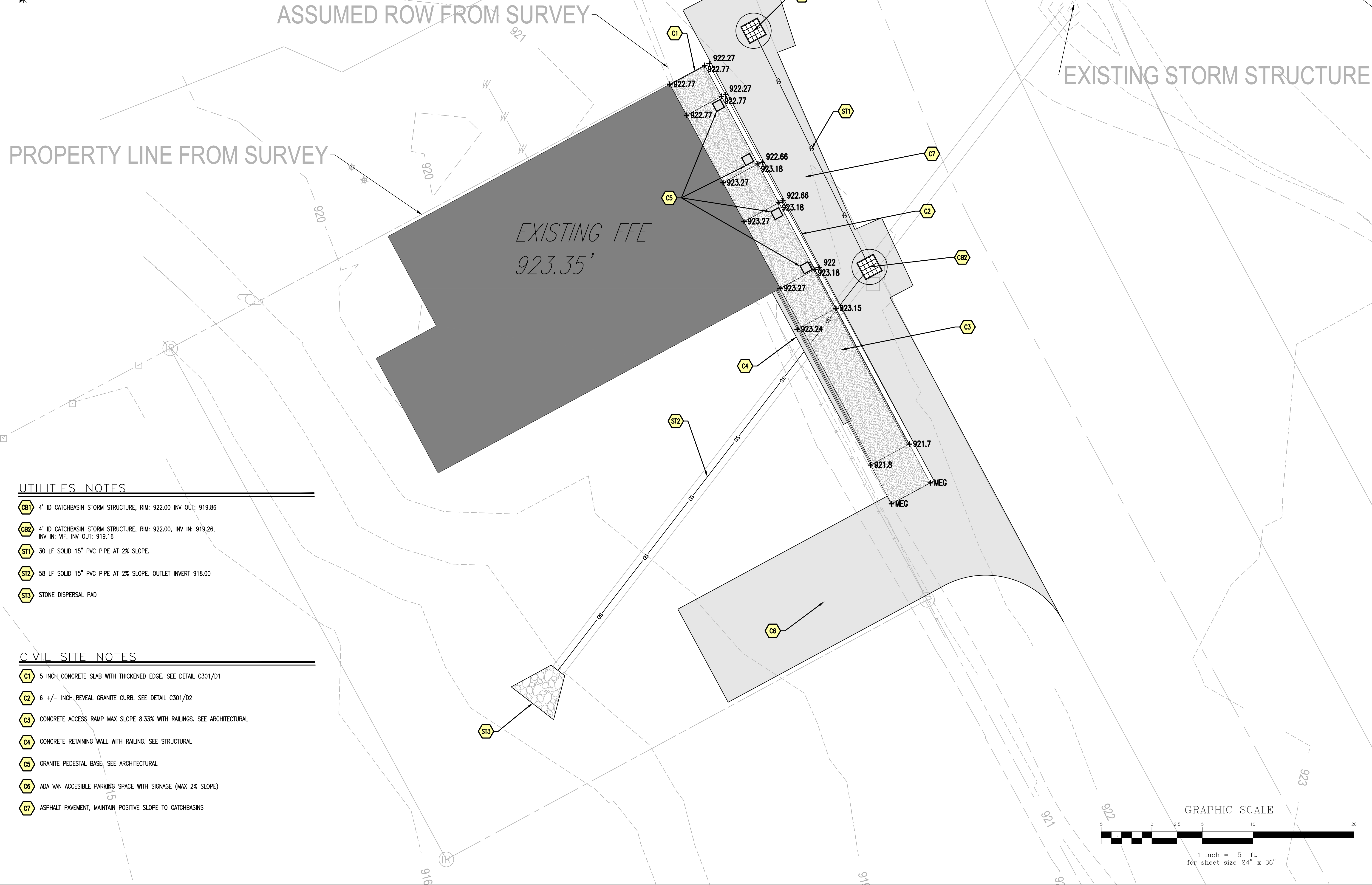
TONI PIPPY
 TOWN OF STRAFFORD
 227 JUSTIN MORRILL MEMORIAL HWY
 STRAFFORD, VERMONT
 PHONE NUMBER

Sheet Title:
EXISTING CONDITIONS AND DEMO
 Project Title:
STRAFFORD TOWN OFFICE RENOVATIONS
 STRAFFORD, ORANGE COUNTY, VERMONT

EV Project #	24537
Drawn By:	LRL
Checked By:	PB
Scale:	1" = 5'
Date:	08/12/2025

C101

S:\PROJECTS\2024\27 SOUTH STRAFFORD TOWN HALL RENOVATIONS - CIVIL\DWG\SHEET FILES\24537_C101_EXISTING CONDITIONS.DWG

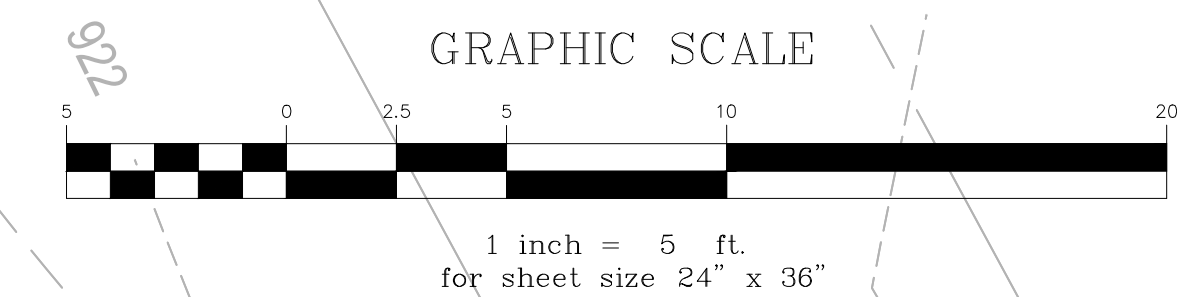


UTILITIES NOTES

- CB1 4' ID CATCHBASIN STORM STRUCTURE, RIM: 922.00 INV OUT: 919.86
- CB2 4' ID CATCHBASIN STORM STRUCTURE, RIM: 922.00, INV IN: 919.26, INV IN: VIF, INV OUT: 919.16
- ST1 30 LF SOLID 15" PVC PIPE AT 2% SLOPE.
- ST2 58 LF SOLID 15" PVC PIPE AT 2% SLOPE. OUTLET INVERT 918.00
- ST3 STONE DISPERSAL PAD

CIVIL SITE NOTES

- C1 5 INCH CONCRETE SLAB WITH THICKENED EDGE. SEE DETAIL C301/D1
- C2 6 +/- INCH REVEAL GRANITE CURB. SEE DETAIL C301/D2
- C3 CONCRETE ACCESS RAMP MAX SLOPE 8.33% WITH RAILINGS. SEE ARCHITECTURAL
- C4 CONCRETE RETAINING WALL WITH RAILING. SEE STRUCTURAL
- C5 GRANITE PEDESTAL BASE. SEE ARCHITECTURAL
- C6 ADA VAN ACCESSIBLE PARKING SPACE WITH SIGNAGE (MAX 2% SLOPE)
- C7 ASPHALT PAVEMENT, MAINTAIN POSITIVE SLOPE TO CATCHBASINS



No.	Description	Date	Stamp
1	COORDINATION UPDATE	02/20/2025	

ENGINEERING VENTURES PC

208 Flynn Avenue, Suite 2A, Burlington, VT 05401 • 802-863-6225
 85 Mechanic Street, Suite E2-3, Lebanon, NH 03766 • 603-442-3333
 414 Union Street, Schenectady, NY 12305 • 518-205-9141
 www.engineeringventures.com

TONI PIPPY
 TOWN OF STRAFFORD
 227 JUSTIN MORRILL MEMORIAL HWY
 STRAFFORD, VERMONT
 PHONE NUMBER

PROPOSED CONDITIONS
STRAFFORD TOWN OFFICE RENOVATIONS
 STRAFFORD, ORANGE COUNTY, VERMONT

EV Project # 24537
 Drawn By: LRL
 Checked By: PB
 Scale: 1" = 5'
 Date: 08/12/2025

C201