



CONSTRUCTION
 DIVISION
 ENGINEERING
 DIVISION
 1550-S-100
 1550-S-100

PROJECT NUMBER

DATE

BY

DESCRIPTION

REV

DATE

BY

DESCRIPTION

REV

DATE

BY

DESCRIPTION

REV

DATE

BY

DESCRIPTION

REV

DATE

BY

DESCRIPTION

REV

DATE

BY

DESCRIPTION

REV

DATE

BY

DESCRIPTION

REV

DATE

BY

DESCRIPTION

REV

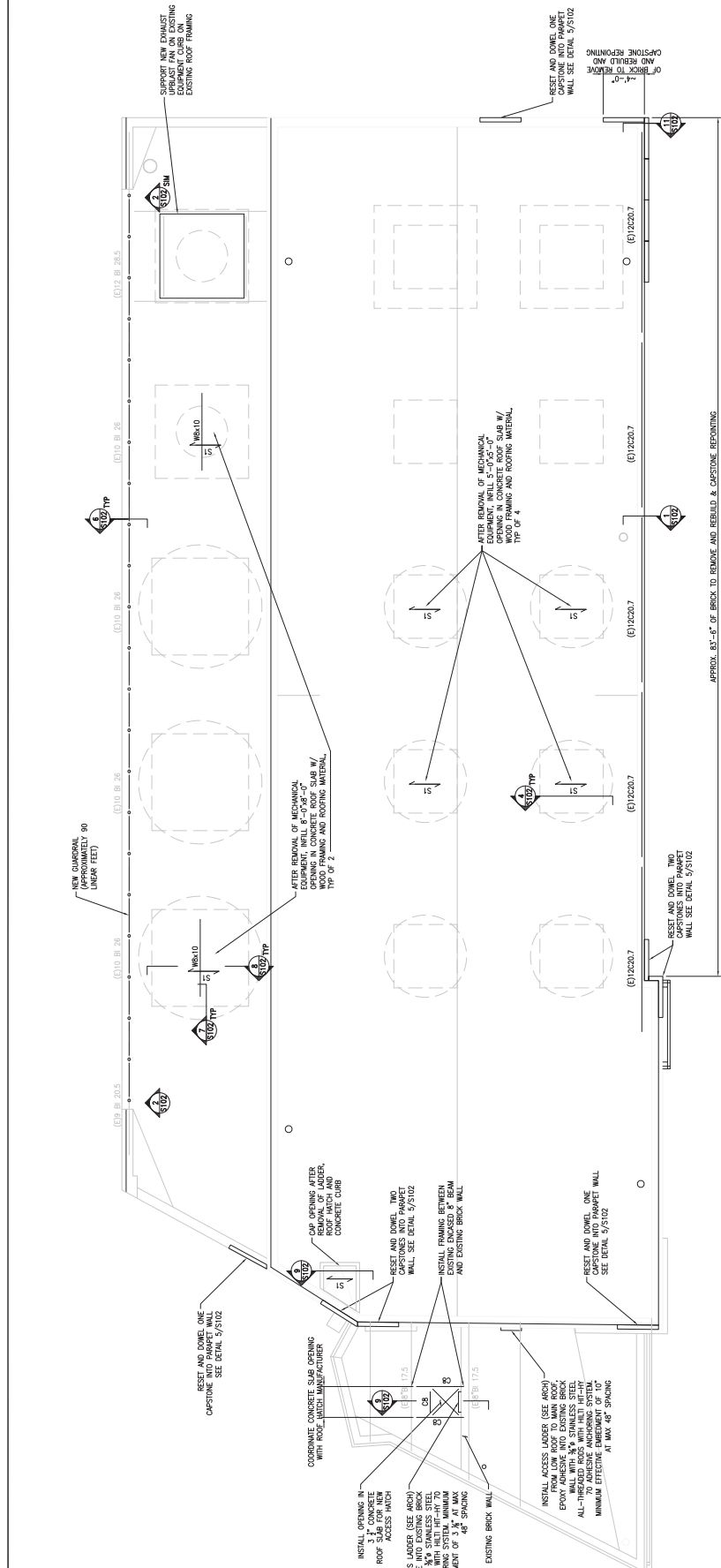
DATE

BY

DESCRIPTION

ROOF REPLACEMENT PROJECT
 CITY TRANSIT DIVISION
STRUCTURAL
 GENERAL PLAN

AS NOTED
 DATE: 03/02/2016
 DRAWN BY: [Name]
 CHECKED BY: [Name]
 PROJECT NUMBER: 1550-S-100
\$101
 SHEET NO. 1 OF 12
 DRAWING NO. 1550-S-100



APPROX. 83'-5" OF BRICK TO REMOVE AND REBUILD & CASTSTONE REPOINTING

RESET AND DOWEL TWO CASTSTONES INTO PARAPET WALL SEE DETAIL 9/3102

RESET AND DOWEL ONE CASTSTONE INTO PARAPET WALL SEE DETAIL 9/3102

INSTALL ACCESS LADDER (SEE ARCH) FROM LOW ROOF TO MAIN ROOF. ENCLOSED WITH 3/4" STAINLESS STEEL WALL WITH 3/4" STAINLESS STEEL ALL-THREADED ROOF ANCHORING SYSTEM. MINIMUM EFFECTIVE EMBEDMENT OF 10" AT MAX 48" SPACING.

INSTALL ACCESS LADDER (SEE ARCH) FROM LOW ROOF TO MAIN ROOF. ENCLOSED WITH 3/4" STAINLESS STEEL WALL WITH 3/4" STAINLESS STEEL ALL-THREADED ROOF ANCHORING SYSTEM. MINIMUM EFFECTIVE EMBEDMENT OF 10" AT MAX 48" SPACING.

INSTALL ACCESS LADDER (SEE ARCH) FROM LOW ROOF TO MAIN ROOF. ENCLOSED WITH 3/4" STAINLESS STEEL WALL WITH 3/4" STAINLESS STEEL ALL-THREADED ROOF ANCHORING SYSTEM. MINIMUM EFFECTIVE EMBEDMENT OF 10" AT MAX 48" SPACING.

INSTALL ACCESS LADDER (SEE ARCH) FROM LOW ROOF TO MAIN ROOF. ENCLOSED WITH 3/4" STAINLESS STEEL WALL WITH 3/4" STAINLESS STEEL ALL-THREADED ROOF ANCHORING SYSTEM. MINIMUM EFFECTIVE EMBEDMENT OF 10" AT MAX 48" SPACING.

INSTALL ACCESS LADDER (SEE ARCH) FROM LOW ROOF TO MAIN ROOF. ENCLOSED WITH 3/4" STAINLESS STEEL WALL WITH 3/4" STAINLESS STEEL ALL-THREADED ROOF ANCHORING SYSTEM. MINIMUM EFFECTIVE EMBEDMENT OF 10" AT MAX 48" SPACING.

INSTALL ACCESS LADDER (SEE ARCH) FROM LOW ROOF TO MAIN ROOF. ENCLOSED WITH 3/4" STAINLESS STEEL WALL WITH 3/4" STAINLESS STEEL ALL-THREADED ROOF ANCHORING SYSTEM. MINIMUM EFFECTIVE EMBEDMENT OF 10" AT MAX 48" SPACING.

INSTALL ACCESS LADDER (SEE ARCH) FROM LOW ROOF TO MAIN ROOF. ENCLOSED WITH 3/4" STAINLESS STEEL WALL WITH 3/4" STAINLESS STEEL ALL-THREADED ROOF ANCHORING SYSTEM. MINIMUM EFFECTIVE EMBEDMENT OF 10" AT MAX 48" SPACING.

INSTALL ACCESS LADDER (SEE ARCH) FROM LOW ROOF TO MAIN ROOF. ENCLOSED WITH 3/4" STAINLESS STEEL WALL WITH 3/4" STAINLESS STEEL ALL-THREADED ROOF ANCHORING SYSTEM. MINIMUM EFFECTIVE EMBEDMENT OF 10" AT MAX 48" SPACING.

INSTALL ACCESS LADDER (SEE ARCH) FROM LOW ROOF TO MAIN ROOF. ENCLOSED WITH 3/4" STAINLESS STEEL WALL WITH 3/4" STAINLESS STEEL ALL-THREADED ROOF ANCHORING SYSTEM. MINIMUM EFFECTIVE EMBEDMENT OF 10" AT MAX 48" SPACING.

INSTALL ACCESS LADDER (SEE ARCH) FROM LOW ROOF TO MAIN ROOF. ENCLOSED WITH 3/4" STAINLESS STEEL WALL WITH 3/4" STAINLESS STEEL ALL-THREADED ROOF ANCHORING SYSTEM. MINIMUM EFFECTIVE EMBEDMENT OF 10" AT MAX 48" SPACING.

INSTALL ACCESS LADDER (SEE ARCH) FROM LOW ROOF TO MAIN ROOF. ENCLOSED WITH 3/4" STAINLESS STEEL WALL WITH 3/4" STAINLESS STEEL ALL-THREADED ROOF ANCHORING SYSTEM. MINIMUM EFFECTIVE EMBEDMENT OF 10" AT MAX 48" SPACING.

INSTALL ACCESS LADDER (SEE ARCH) FROM LOW ROOF TO MAIN ROOF. ENCLOSED WITH 3/4" STAINLESS STEEL WALL WITH 3/4" STAINLESS STEEL ALL-THREADED ROOF ANCHORING SYSTEM. MINIMUM EFFECTIVE EMBEDMENT OF 10" AT MAX 48" SPACING.

A PLAN
 SCALE: 1/4" = 1'-0"
 REF: -

1. REFER TO GENERAL NOTES ON SHEET S100 FOR ADDITIONAL INFORMATION.
2. COORDINATE ALL WORK WITH OTHER DISCIPLINES.
3. FRAMING PLAN AND DETAILS DATED JANUARY 3, 1927.
4. ALL SIZES, DIMENSIONS AND ELEVATIONS TO BE FIELD VERIFIED PRIOR TO ANY STEEL ERECTION.
5. ALL UTILITIES AND BUILDING SERVICES, WATER, SEWER, GAS, ETC., TO BE FIELD VERIFIED PRIOR TO ANY STEEL ERECTION.
6. S11 INDICATES SPAN OF 1'-0" TO OAGE INTERMEDIATE RIG CONTINUOUS GALVANIZED METAL ROOF DECK. SEE PLAN FOR SPAN OF DECK. SEE GENERAL NOTES FOR DECK ATTACHMENT.
7. NEW ROOFER EQUIPMENT TO BE SUPPORTED BY EXISTING CONCRETE CURB AND EXISTING ROOF FRAMING. DEVIATIONS FROM THE GIVEN DESIGN ASSUMPTIONS TO BE REPORTED TO ENGINEER OF RECORD.
- 7.1. EXHAUST UPBLAST FAN (HARTZELL A89—84848552003): 3100 LBS
- 7.2. WINE VENTILATOR (GREENHECK F09): 293 LBS
- 7.3. DRYWALL VENTILATOR (GREENHECK F09): 191 LBS

