

Constellation / SEPTA Loudon

Loudon Site Layout

3ACD611143E0041-rev2 –
Was 2 battery distribution panel
3ACD11143E0041 – rev 3 –
ESS converters 90 degree turned+ batterie
layout changed

2017/10/02



Bruno Boulianne ing

2017-10-02

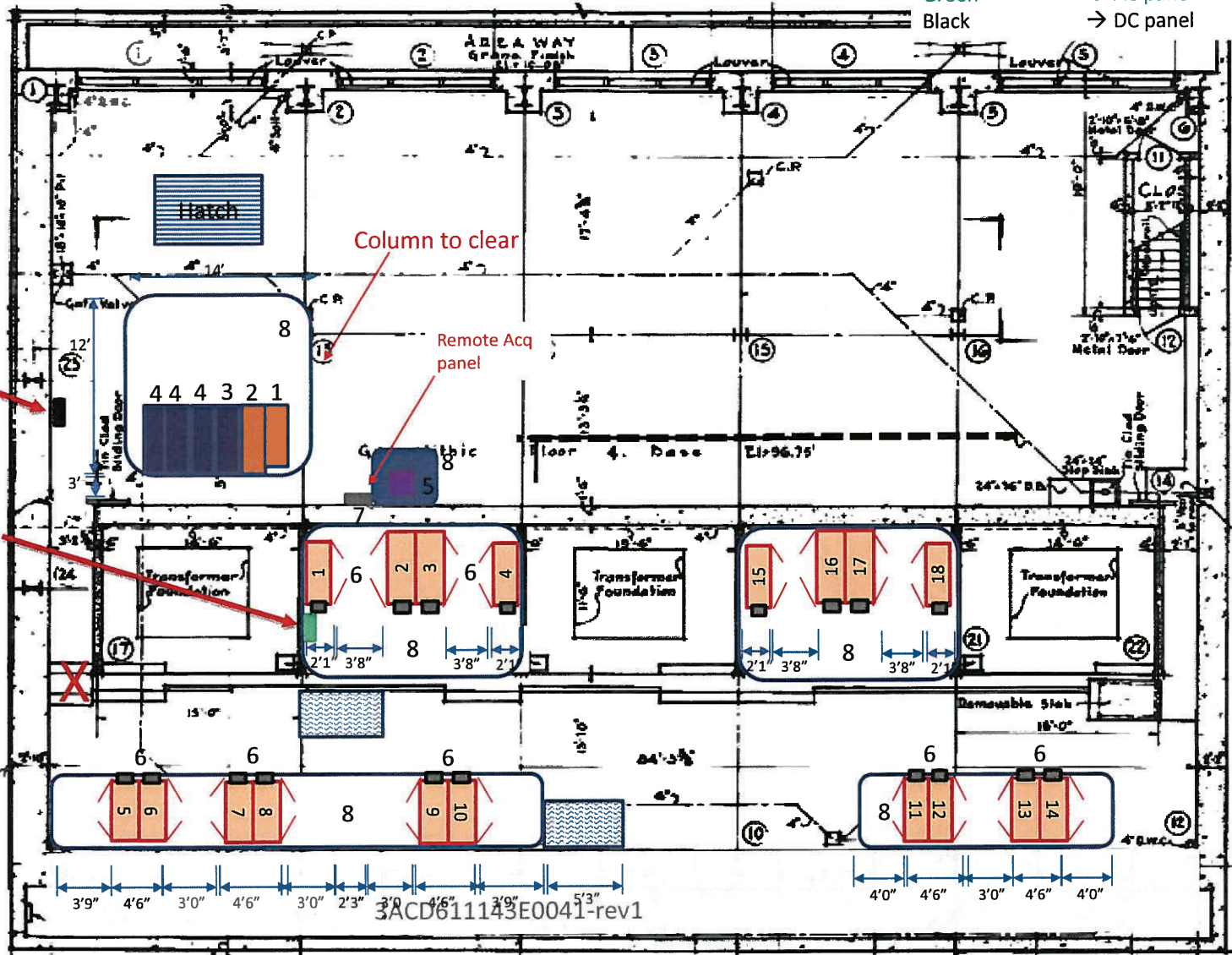
- 1 High Speed Circuit Breaker
- 2 Transition Cell
- 3 Master Converter
- 4 Slave Converter
- 5 Battery Distribution
- 6 Batteries
- 7 Acquisition panel
- 8 concrete pad

- Orange → HSCB & transition cab
- Blue → Converters
- Purple → Battery distribution
- Red → Batteries
- Gray → Acquisition panel
- Green → AC panel
- Black → DC panel

Loudon Basement – Equipment Positioning

Suggested location for the new DC panel 1st floor

Suggested location for the new 240V AC panel



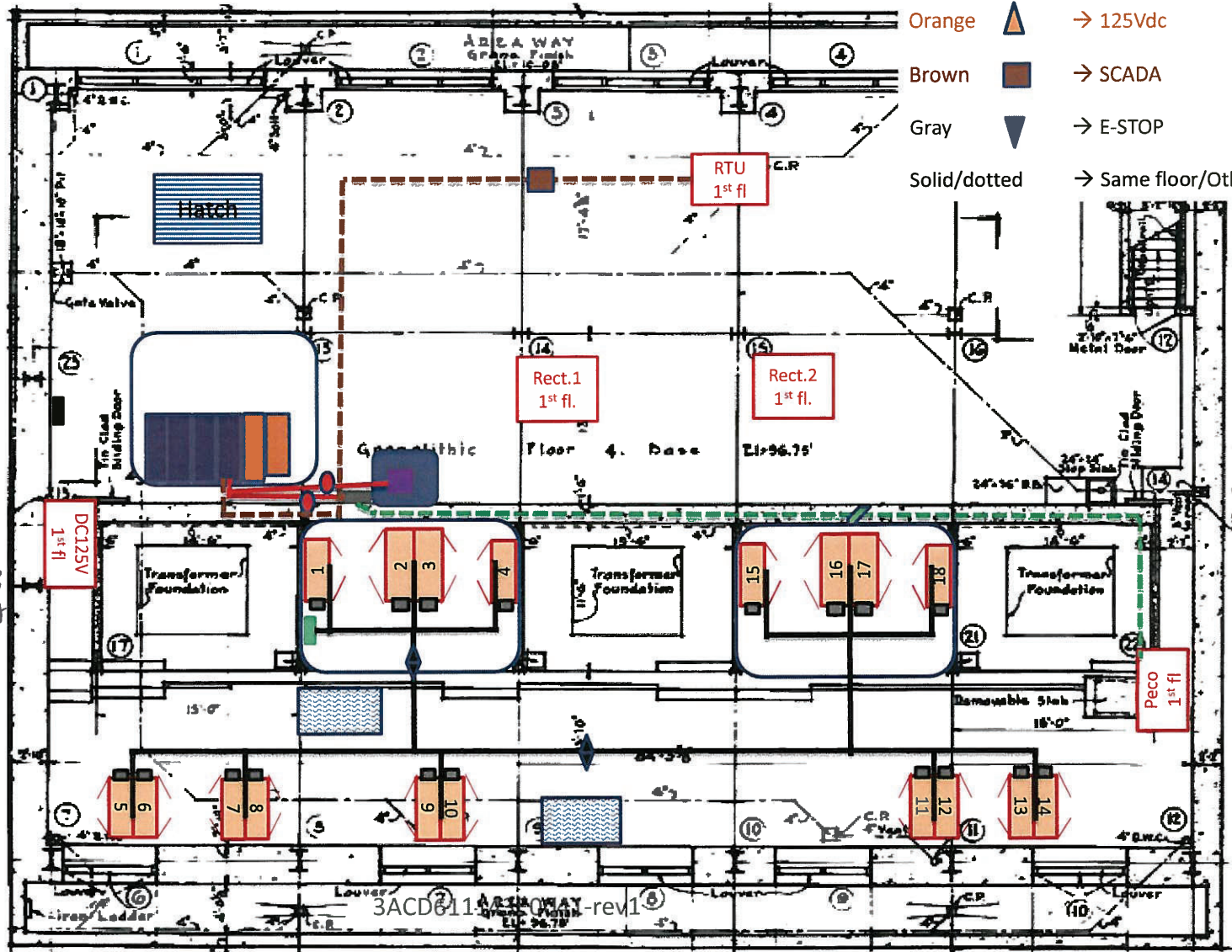
2017-10-02

2017/10/02

3ACD611143E0041-rev1

Loudon Basement – SCADA & signal equipment location

- Red ● → Network
- Green ▤ → Peco connection
- Black ◆ → 240Vac for Hvac
- Orange ▲ → 125Vdc
- Brown ■ → SCADA
- Gray ▼ → E-STOP
- Solid/dotted → Same floor/Other floor

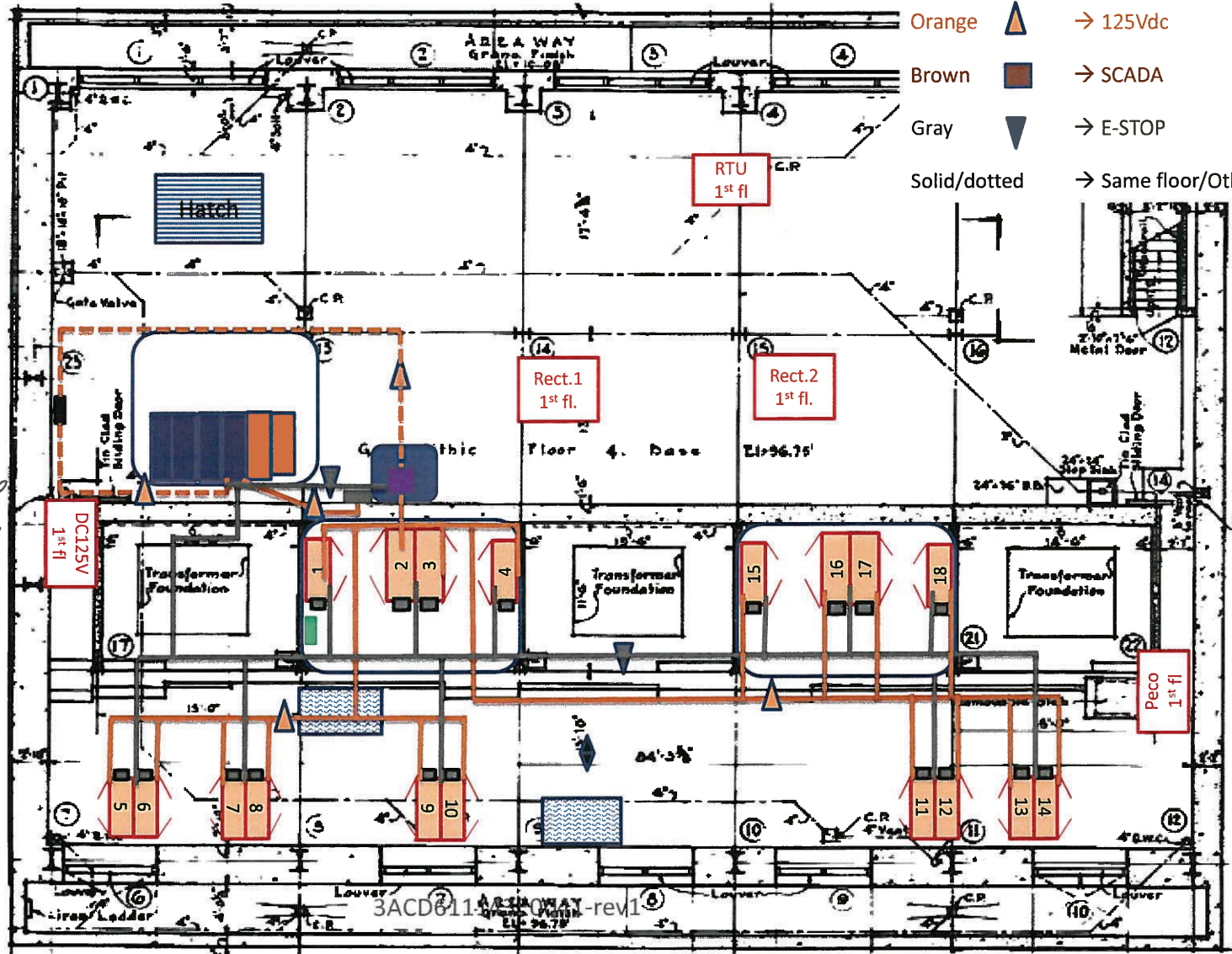


Bruno Boulianne
2017-10-02 ing

2017/10/02

Loudon Basement – SCADA & signal equipment location

- Red ● → Network
- Green ▽ → Peco connection
- Black ◆ → 240Vac for Hvac
- Orange ▲ → 125Vdc
- Brown ■ → SCADA
- Gray ▼ → E-STOP
- Solid/dotted → Same floor/Other floor



Bruno Boullanne
ing
2017-10-02

2017/10/02