

Constellation / SEPTA Park

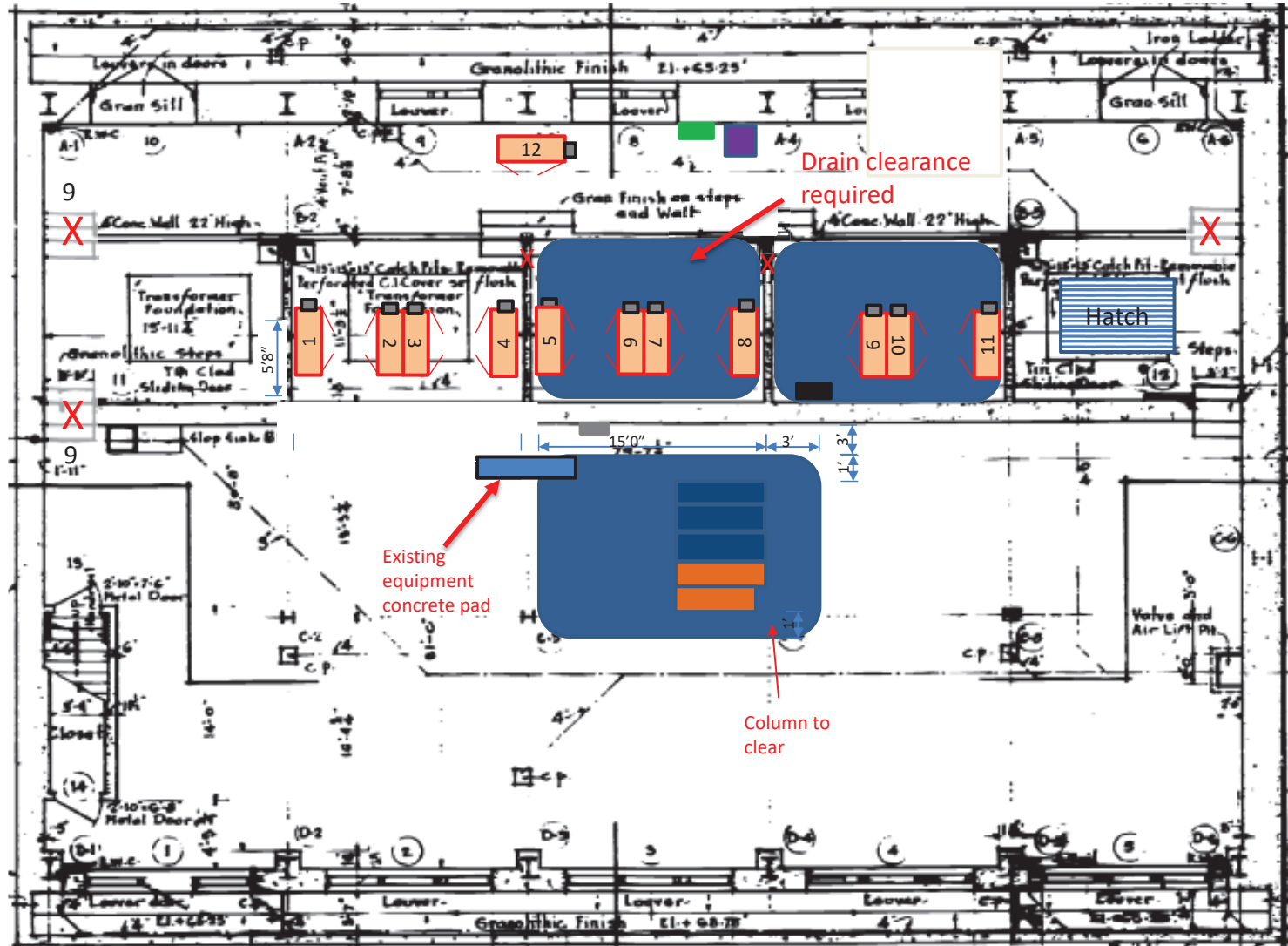
Park Site Layout

concrete pad



X concrete to remove

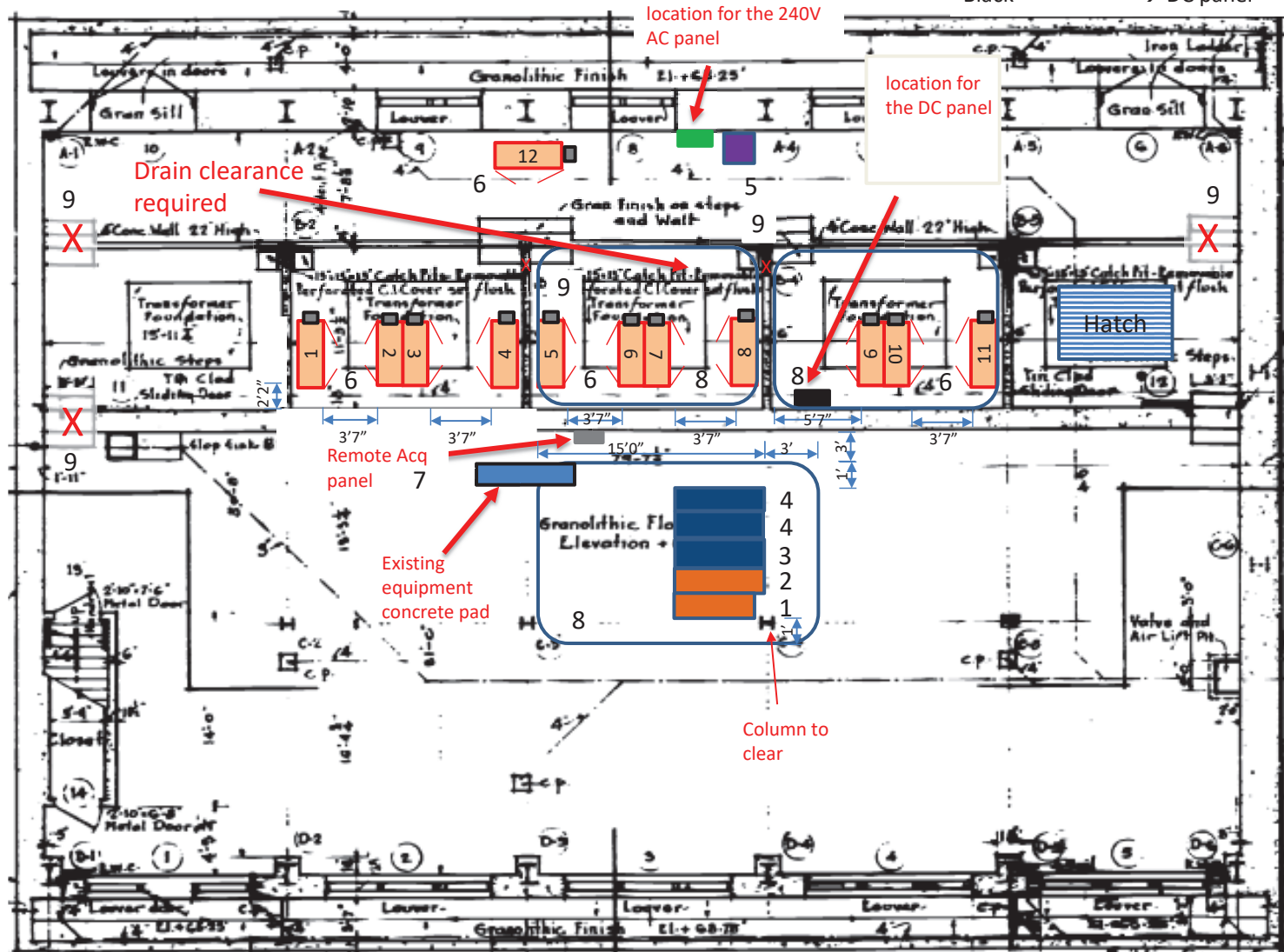
Park Basement – Concrete



- 1 High Speed Circuit Breaker
- 2 Transition Cell
- 3 Master Converter
- 4 Slave Converter
- 5 Battery Distribution
- 6 Batteries
- 7 Acquisition panel
- 8 concrete pad
- 9 X Concrete to remove

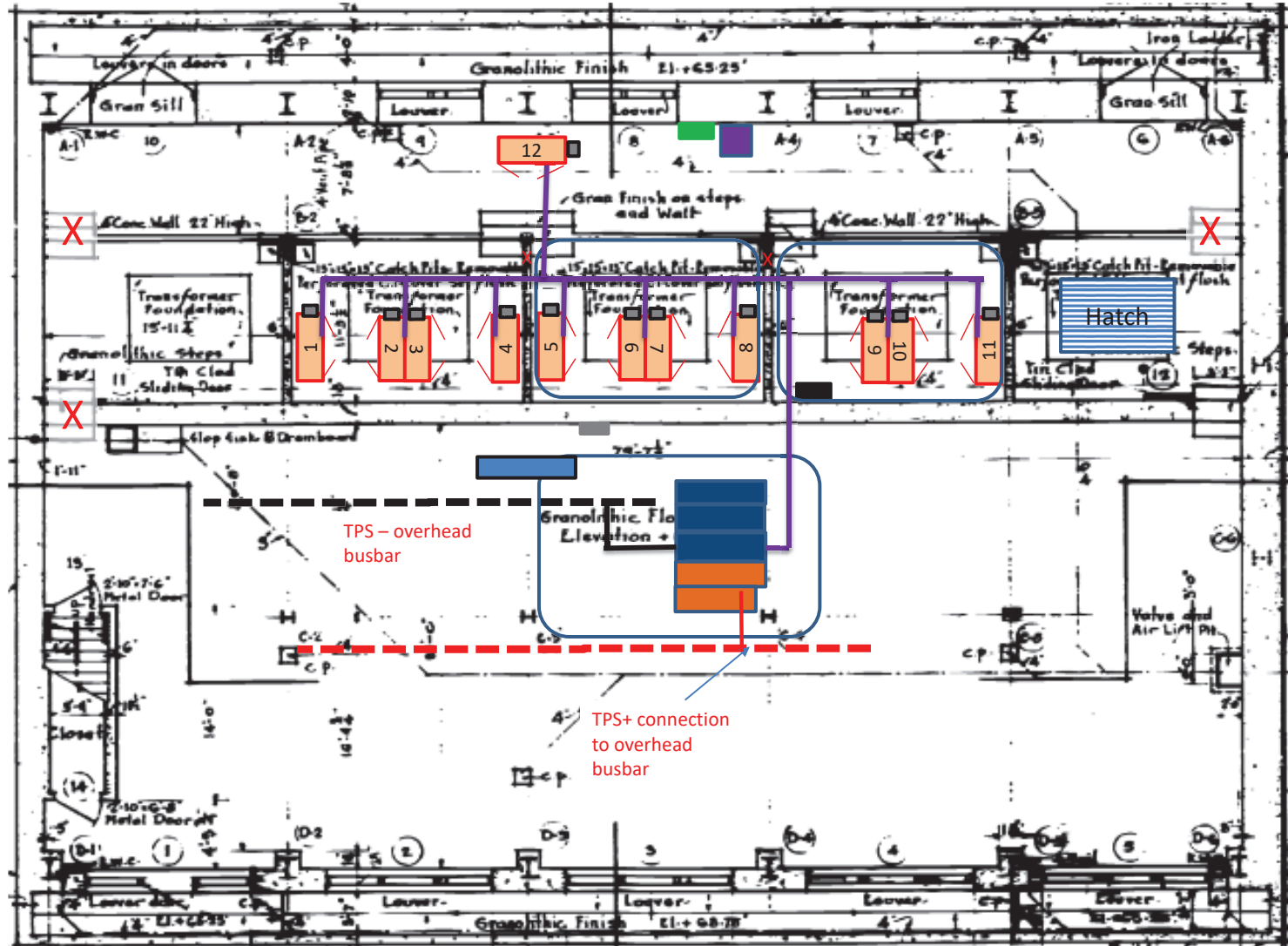
- Orange → HSCB & transition cab
- Blue → Converters
- Purple → Battery distribution
- Red → Batteries
- Gray → Acquisition panel
- Green → AC panel
- Black → DC panel

Park Basement – Equipment Positioning



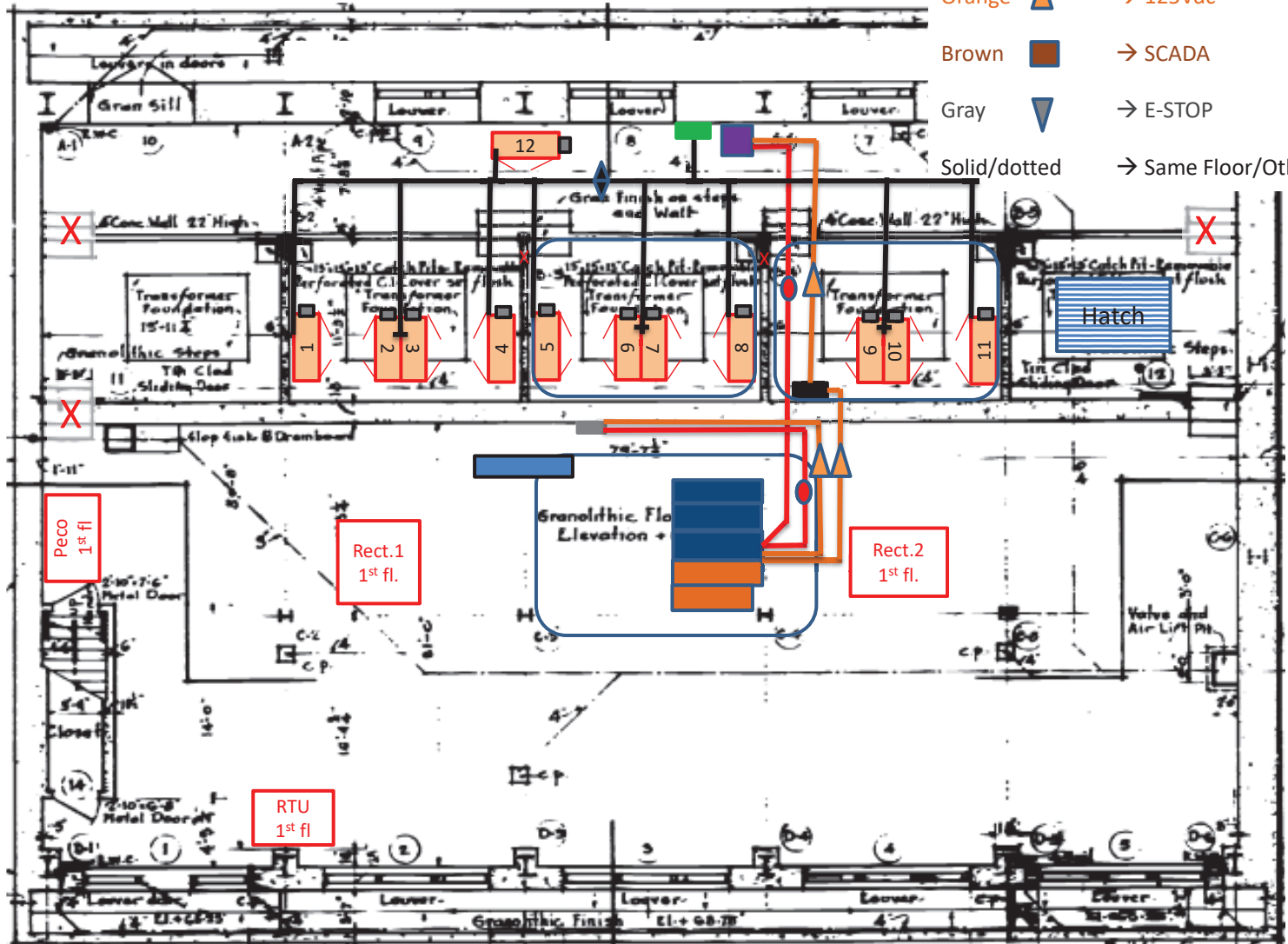
Park Basement – Power Connections

- Red line → TPS+ power cable
- Black Line → TPS- power cable
- Purple → Batteries power cable
- Solid/dotted → Same Floor/Other Floor



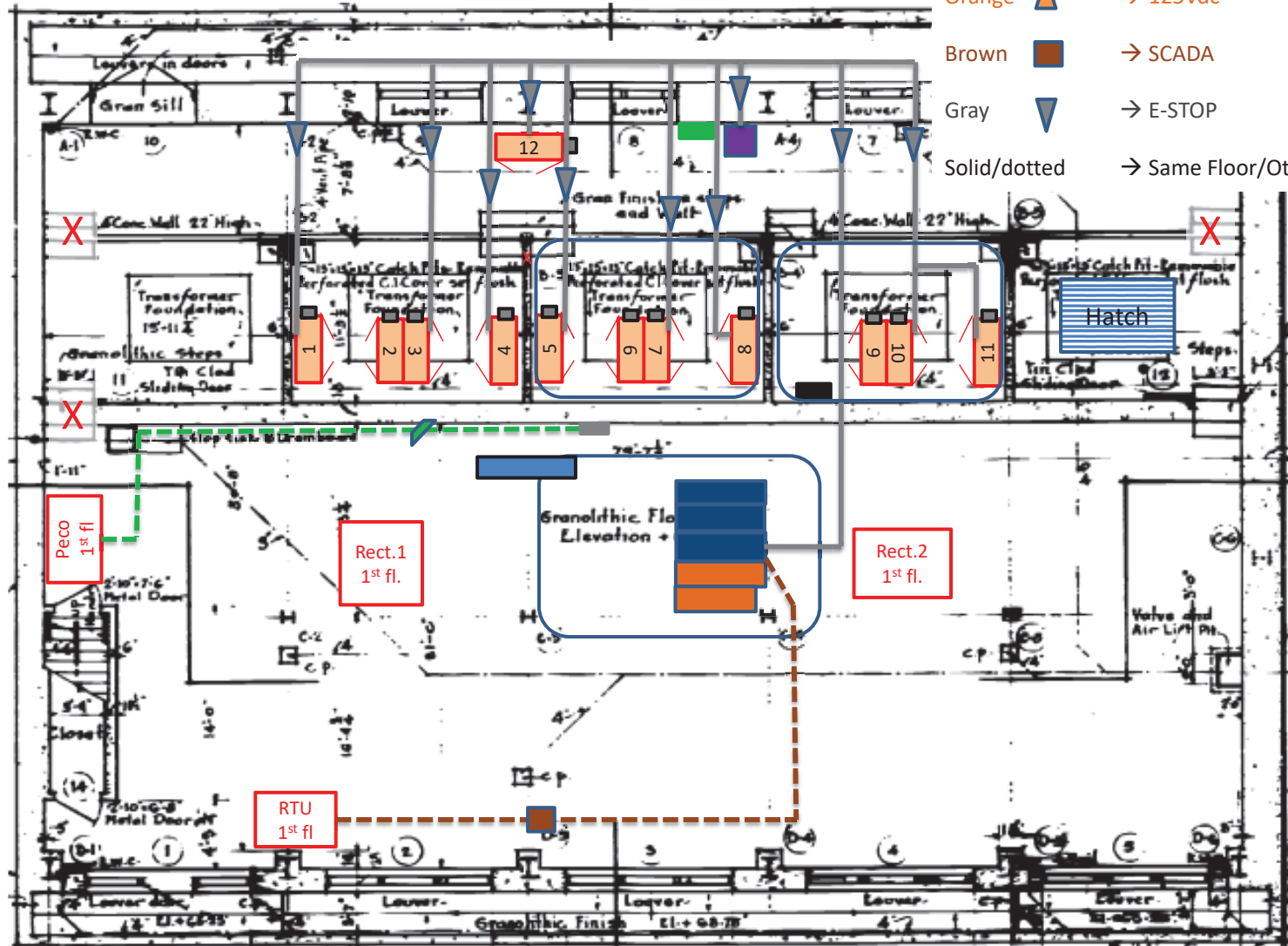
Park Basement – SCADA & signal equipment location

- Red ● → Network
- Green ▽ → Peco connection
- Black ◆ → 240Vac for Hvac
- Orange ▲ → 125Vdc
- Brown ■ → SCADA
- Gray ▼ → E-STOP
- Solid/dotted → Same Floor/Other Floor



Park Basement – SCADA & signal equipment location

- Red ● → Network
- Green ↗ → Peco connection
- Black ◆ → 240Vac for Hvac
- Orange ▲ → 125Vdc
- Brown ■ → SCADA
- Gray ▼ → E-STOP
- Solid/dotted → Same Floor/Other Floor



Park Basement – SCADA & signal equipment location

- Red ● → Network
- Green ▽ → Peco connection
- Black ◆ → 240Vac for Hvac
- Orange ▲ → 125Vdc
- Brown ■ → SCADA
- Gray ▼ → E-STOP
- Solid/dotted → Same Floor/Other Floor

